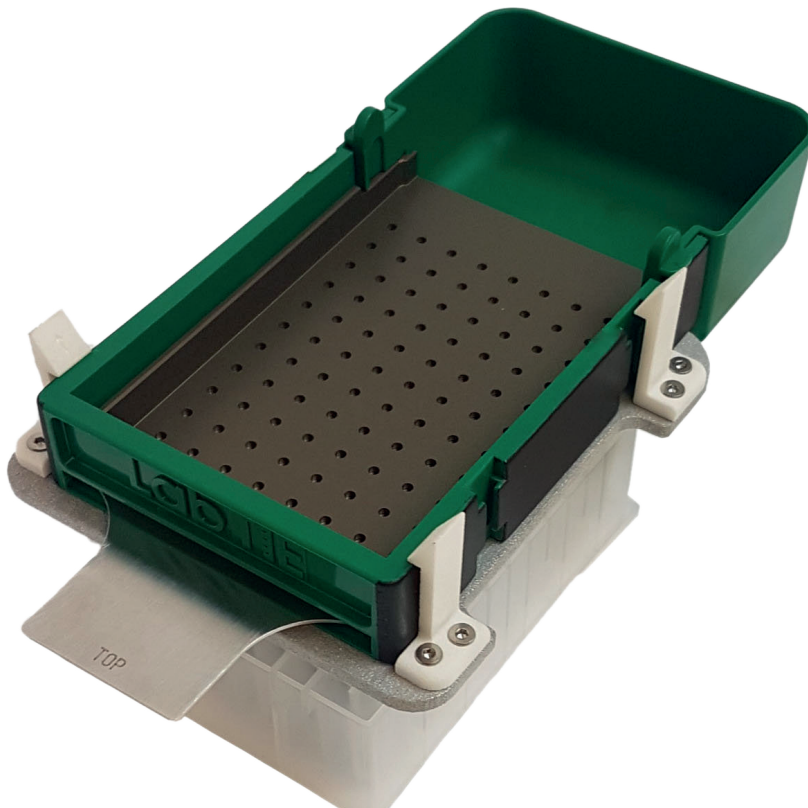


# LabTIE Seed Dispenser

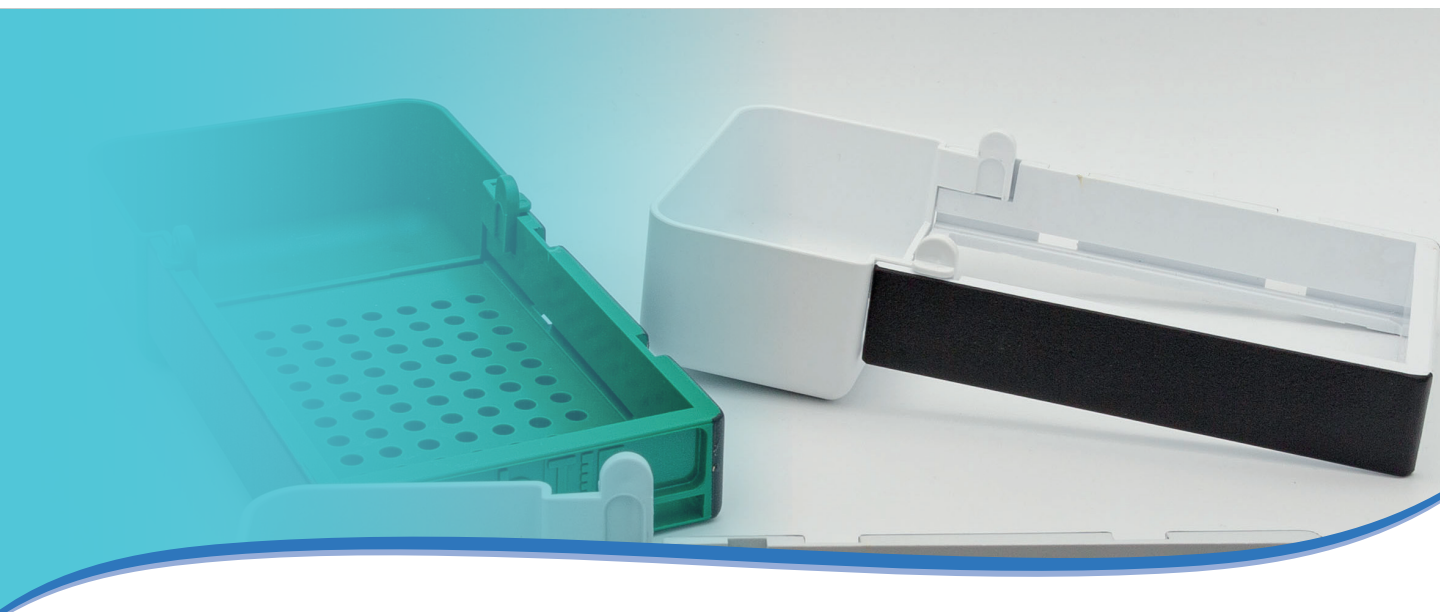
ACCURATE MODULAR SEED DISPENSER

Simple. Fast. Reliable



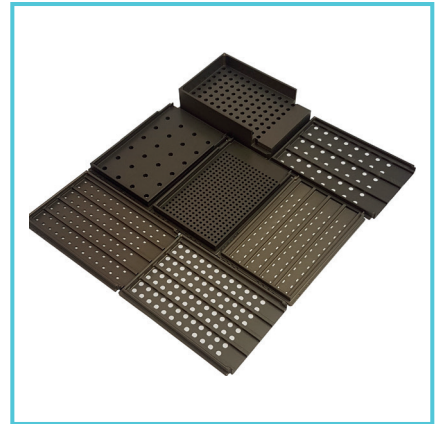
# LabTIE Seed Dispenser

The LabTIE Seed Dispenser ensures fast and accurate dispensing for all types of seeds. Due to its modular design with exchangeable mesh plates it can dispense all types and variations of seeds.



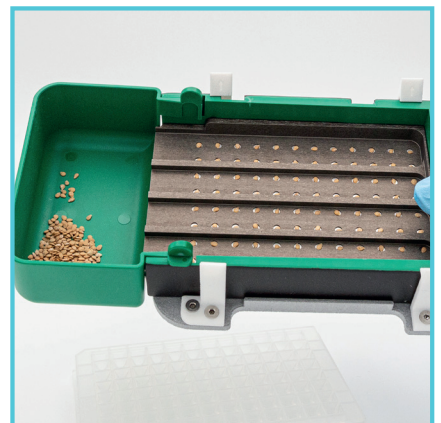
## FIND THE RIGHT FIT FOR YOU

- Custom made mesh plates for all types of seeds
- Exchangeable mesh plates to maximize flexibility
- Wide variety of container types such as tubes, microtiter plates, vials, trays, petri dishes etc.
- Available in 5 types of grid:
  - 24
  - 45
  - 48
  - 96
  - 384



## EASY TO USE

- Simple change of mesh plates from the Seed Dispenser between applications
- User-friendly dispensing by pulling the slider
- Easy to clean



## INCREASE YOUR ACCURACY

- Accurate dispensing, <2% error rate
- Dispenses seeds with sizes from 0.2mm to 9.0mm accurately
- A single seed per well is dropped in your designated grid



## FAST AND RELIABLE

- Dispensing in only 30 seconds
- Anodized Aluminum mesh plate with anti-static properties to minimize interaction with your input material
- Designed, produced and tested by our own Tech Division



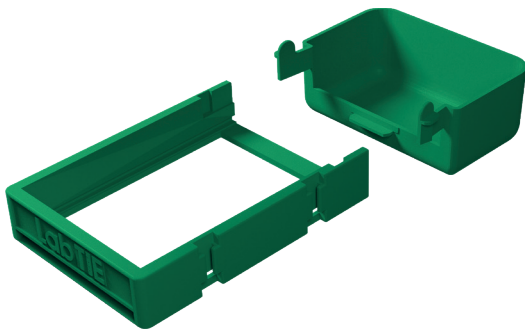
# LabTIE Seed Dispenser

## Product Dimensions



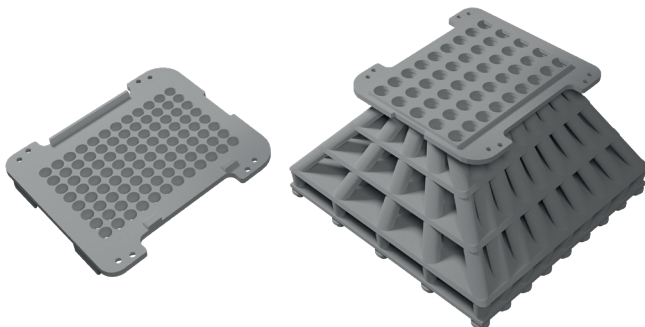
### MESHPLATE

- L: 130 mm
- W: 87 mm
- H: 10/15/20/25 mm



### MAIN UNIT + BUCKET

- L: 185 mm
- W: 90 mm
- H: 40 mm



### CONVERTER

- Flat or funnel shaped
- Varying sizes depending on designated grid

# LabTIE Seed Dispenser

## Grid Compatibility Information

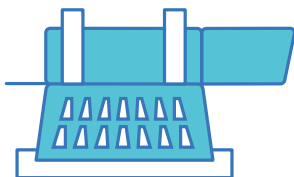
Plates	96-well microtiter, cell culture, deep-well plates, plates with strips
	384-well microtiter and deep-well plates
	24-well microtiter and deep-well plates
	48-well microtiter and deep-well plates
Tubes	Snap cube tube 0.2mL – 1.5mL
	Screw cap tube 1.5 mL – 2.0 mL
	Cryo tube 1.5 mL – 2.0 mL
	1.5 mL – 2.0mL Autosample (GC) Vials
Petri Dishes	9 cm and 10 cm Agar/Blot paper (round)
	10 cm and 12 cm Agar/Blot paper (square)
Trays	Germination Tray Blot paper/Soil
	108-Well tray Soil
	Tray Soil 35x22 cm

# LabTIE Seed Dispenser

## Product Composition

Mesh plate	Anodized Aluminum 6082
Bucket	Polycarbonate 90% - Acrylamide 10%
Main Unit	Polycarbonate 90% - Acrylamide 10%
Slider	RVS 316
Clamp/Finger	Nylon
Bolt and nut	RVS 304
Converter	Aluminum/Nylon composition

## Product information



Product name	Reference
LabTIE Seed Dispenser	Contact our sales rep. for reference